



# Versaterm Adashi

Incident Management  
Solutions for Intelligent  
Coordinated Fire Response

 versaterm



# Mission-Critical Information and Accountability

Fire incident management requires a seamless coordination of resources, personnel, and equipment to respond to emergencies swiftly and effectively. By leveraging the latest technologies and strategies, firefighters can ensure the safety of both themselves and the public they serve.

From staffing to incident response, on-scene incident management to situational awareness, having key data at your fingertips can make all the difference.

Versaterm Adashi solutions provide tightly integrated applications that enable agencies to make informed and intelligent decisions during every step of an incident response.



Versaterm  
Adashi  
RollCall



Versaterm  
Adashi  
FirstResponse



Versaterm  
Adashi  
Command  
& Control



Versaterm  
Adashi  
Alert/LiveView

A photograph of firefighters in a smoky forest, viewed from behind. They are wearing yellow and black gear with reflective stripes. The scene is hazy with smoke or mist. The image is partially obscured by a teal overlay on the right side.

# Versaterm Adashi

Providing mission-critical data while focusing on accountability with robust integrations

Adopted by agencies worldwide, Versaterm Adashi offers a complete software platform to manage every stage of response by utilizing key integrations for staffing, SCBA air monitoring, PAR checks, notifications, mapping and more.

Partnered with 3M™Scott™ for SCBA telemetry data and L3Harris™ for digital PAR checks, situational awareness and personnel accountability are readily available with the tap of a button.

Whether you're pre-planning, working an incident or in-station, enhance your situational awareness with the Versaterm Adashi end-to-end incident management platform.

# Integrated Modules Help Eliminate Single Points of Failure

Bring efficiency to your daily workflow at every step



## Staffing

Versaterm  
Adashi RollCall



## Response

Versaterm Adashi  
FirstResponse



## Incident Command & Accountability

Versaterm Adashi  
Command & Control



## Situational Awareness

Versaterm Adashi  
Alert/LiveView

# Improve Accountability

Enhance situational awareness and first responder safety  
by leveraging streamlined data



## Staffing

Know who is responding to incidents and meet apparatus staffing targets by assigning personnel to seats



## Safety

Ease decision-making and personnel accountability with robust integrations, such as 3M™Scott™ SCBA and L3Harris™ radios



## Availability

Build a dynamic staffing roster with decision validation, notifications, and cross-platform interfacing

# Modernize Processes

Efficiently manage department workflows and reduce administrative burden



## Data Dashboard

Digitally leverage key information such as preplans, maps, staffing, CAMEO data, and more



## Streamline Communications

Share information seamlessly; internally with platform interfacing and externally with personnel notifications

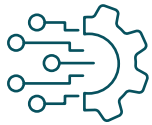


## Stay On Task

Create, upload, and access dynamic tactical worksheets, checklists and standard operating procedures and guidelines

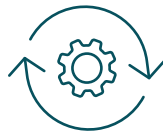
# Versaterm Adashi RollCall

A comprehensive enterprise-level solution for first responder staff scheduling and overtime management



## Actionable Personnel Data

Export daily rosters for RMS and payroll or interface directly within the Versaterm Adashi platform for real-time personnel accountability



## Configurable

Meet scheduling goals using department and union rules with automatic flagging for missed staffing targets



## Reduce Admin Burden

Simplify overtime offers, notify personnel of open shifts, and track absences

Note: Available via web browser and native iOS/Android mobile apps

# Versaterm Adashi FirstResponse

Digitally access mission-critical data in one central location for a coordinated and intelligent response



## Dynamic Interface

Designed for mobile response for the fire service with clean design, large buttons, and no screen-scrolling



## Digital Dashboard

View key data such as preplans, CAD notes, maps, standard operating guidelines, incident action plans, and more



## Incident Notifications

Receive high-priority, full-screen alerts of assigned incidents with a detailed summary of dispatch information



# Versaterm Adashi Command & Control

Intelligent command software for real-time incident management and collaboration



## Interactive Interoperability

Collaborate with multiple officers and/or agencies to effectively manage an incident on-scene or remotely



## Firefighter Accountability

Assign personnel to units, monitor air levels, and run digital PAR checks



## Efficient Management

Stay on task with incident-type-specific benchmarks and checklists, automatic action logging, task reminders, and incident playback

# Versaterm Adashi Alert/LiveView

An in-station digital incident dashboard for enhanced situational awareness



## Real-Time Alerts

Directly connected with CAD to notify stations of new incidents and display active calls



## Common Operating Picture

Configurable to receive notifications for your station, department, or geographical region



## Improve Response Times

Displays key incident and unit information and a turnout timer



## About Versaterm

Versaterm is a global public safety solutions company helping agencies transform their organizations by providing innovative solutions, expertise, and an unwavering dedication to customer service. Formed in 1977, we are on a journey to build an ecosystem that will enhance community safety by creating purposeful integrations across the public safety spectrum. We deliver intuitive tools developed for public safety agencies, forensic labs, court systems, schools, and other institutions. Our selective growth strategy focuses on improving customer and user workflows for more efficient and effective operations, leading to better service and more just outcomes. For more information, visit [versaterm.com](https://www.versaterm.com).

Versaterm acquired Adashi Systems (Adashi), a provider of a platform giving public safety agencies, especially fire departments and services, the tools they need to staff, manage and respond to emergencies. The applications offer an end-to-end solution to assist agencies with handling incidents before, during and after they occur. The integrated functions help eliminate single points of failure and enhance responder accountability.