



Versaterm Mindbase

Proactive Connections,
Elevated Wellness

 versaterm



A New Standard in First Responder Wellness

Maintaining high morale among first responders is not just a matter of employee satisfaction; it is a strategic commitment with far-reaching implications for public safety organizations. When mental health issues go unaddressed, it can lead to burnout and oversights that could put both the responder and the public at risk. Over time, these lingering problems can prevent agencies from providing the high level of service that their community relies on.

Using modern technology solutions, agencies can create a positive and supportive work environment centered around proactive wellness, ultimately improving morale and operational effectiveness throughout the workforce. Explore how Versaterm Mindbase builds data-driven, accessible and confidential tools for employee wellness and advanced monitoring tools for peer support leaders.



Leverage Your Own
Data for Good



Handheld Wellness
Help



Always On Connections
and Resources



Tech Supporting
Versaterm Mindbase



Privacy and
Confidentiality



Versaterm Mindbase

A Comprehensive Wellness Platform

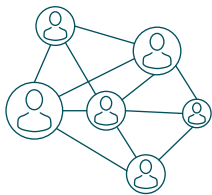
Versaterm Mindbase provides the only comprehensive, data driven and proactive mental health and wellness platform on the market today. Versaterm Mindbase believes in improving mental health by bringing people, knowledge and intelligent technology together.

Comprised of two connected components, the co-branded Versaterm Mindbase platform provides all the necessary wellness tools for early detection and intervention in an iOS and Android driven application and a cloud-based, web-accessed agency peer support administration portal.

Versaterm Mindbase is the first and only solution of its kind, integrating with real-time CAD, RMS and JMS incident data to transform employee wellness programs and apps of the past into peer support technology tools to be Always Mission Ready.

Leverage Your Own Data for Good

Access all the key indicators and data to create a true early detection and identification approach to safety and wellness



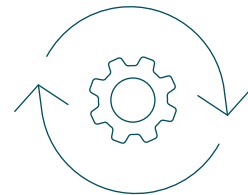
Proactive Monitoring

Keep track of which individuals most likely experienced elevated levels of trauma and should be reached out to, as well as who they have already talked to



Actionable Insights

Track and manage your effectiveness as a peer team with automated monthly stat sheets and provide the right support at the right time to your peers

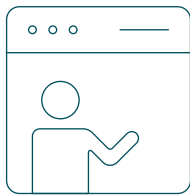


No One Left Behind

Auto generate debrief lists based on incident response, ensuring all individuals are accounted for and debriefs occur at the right time

Handheld Wellness Help

Take advantage of a platform where every part, from user experience to content, from connections to confidentiality, is purpose-built for first responders



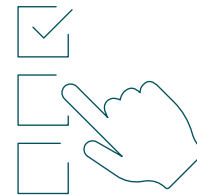
Wellness Toolkit

Leverage a comprehensive app that provides a suite of clinically validated wellness sessions and learning modules designed specifically for first responders, first responder families and retirees



Engagement Resources

The Versaterm Mindbase wellness app comes with the ability to deploy fitness and nutrition challenges to create a rewarding and interactive experience for personnel



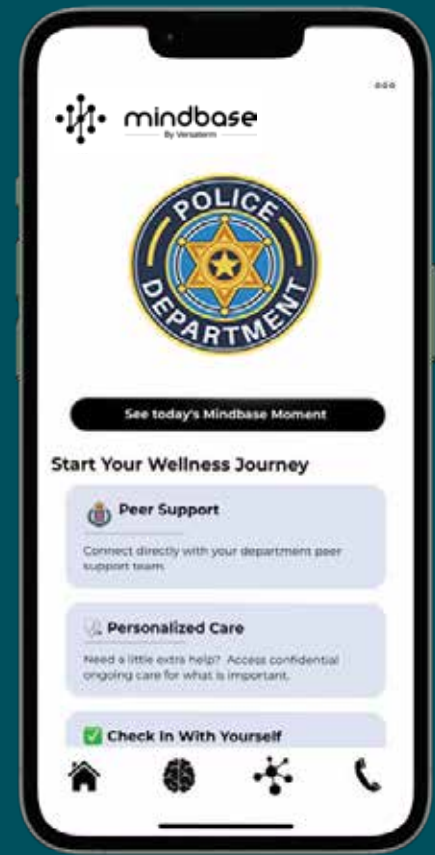
Assessment Tools

Personal, confidential assessments provide users with the ability to self-check and track their progress, connect with peer support team members or clinicians as needed

Always On Connections and Resources

The Versaterm Mindbase app is available 24/7, delivering clinician backed wellness resources for law enforcement, 911 professionals, fire and EMS and any other current or retired employee of public safety agencies. It is designed to support:

- Families of first responders
- Access and communication with Versaterm Mindbase proprietary and agency defined content
- Local, regional or statewide peer support personnel
- Agency contracted and/or culturally competent clinicians
- Local, state or national resources and hotlines
- Periodic and agency defined assessments
- Individualized emotional fitness tracker
- Agency defined personnel support plans to drive engagement



	VersaTerm Mindbase Platform	App-Based Wellness
Early Intervention Alerts	✓	
Operationalized Dashboard	✓	
Proactive Human Connection	✓	
Personalized Experience	✓	
Increased Engagement	✓	
Activity Tracking	✓	
Personalized Self-Care	✓	
Anonymized Reporting	✓	✓
Anonymous Wellness Content	✓	✓
Connections to Peer Support	✓	✓
Connections to Clinical Resources	✓	✓

What Our Customers Say

“I want to express my deepest gratitude for the invaluable support you have provided our agency. The work you have done to promote mental health awareness in our industry has made a significant positive impact on countless lives.”

- **Todd Borowski, RPL, CMCP, Cobb County GA 911**

“Thank you [Versaterm] Mindbase for taking the time to get to know the challenges in Monterey County and offering a solution to enhance the wellness of the Emergency Communications Dept. and our families.”

- **Lee Ann Magoski, Monterey Co. CA 911**

“The [Versaterm] Mindbase platform is such a valuable tool for our department to have quick and easy access to peer support and professional help. Our team now has the ability to help us remember to do our check-ins and figure out what we can do for our people. The app has so many self-help options to help us all learn and grow.”

- **Race Black, Brigham City UT Fire Department**

“It helps me as an administrator make sure the employees have the opportunity to talk about things, to get the help they need, to process properly, and get back out to the community in the best mental shape they can be.”

- **Sheriff Mike Smith, Utah County Sheriff's Office**



Technology Supporting Versaterm Mindbase

The Versaterm Mindbase app is built on a multi-platform development framework. This allows end users to access the portal on iOS, Android or most web browsers.

Platforms officially supported by Versaterm Mindbase include:

- iOS v12 or greater
- Android v8 (Oreo) or greater
- Safari v14 or greater
- Chrome v102 or greater
- Firefox v91 or greater
- Edge v100 or greater

The administration portal is built as a cloud native web application that is designed to be viewed on a larger form factor, such as a computer monitor, but uses a responsive design so that it will also be functional on a mobile device. The platform is designed to be hosted in the AWS GovCloud, with specific roles and permissions given to the site administrators to manage and configure the system.

Privacy and Confidentiality

Versaterm Mindbase takes privacy and security very seriously. Our goal is to provide beneficial resources to first responders in a completely anonymous manner.

The app is secured by a username and password along with an agency code. The username and password are used to communicate directly with an individual through the app.

App usage data is never displayed by individual. Anonymized app usage data can be viewed by the site administrator(s), and the anonymous data may be used by Versaterm Mindbase to determine if content should be added, removed or updated.

The administration portal is secured by a username and password with roles and permissions assigned by the site administrator(s).



About Versaterm

Versaterm is a global public safety solutions company helping agencies transform their organizations by providing innovative solutions, expertise and an unwavering dedication to customer service. Formed in 1977, we are on a journey to build an ecosystem that will enhance community safety by creating purposeful integrations across the public safety spectrum. We deliver intuitive tools developed for public safety agencies, forensic labs, court systems, schools and other institutions. Our selective growth strategy focuses on improving customer and user workflows for more efficient and effective operations, leading to better service and more just outcomes. For more information, visit [versaterm.com](https://www.versaterm.com).

Versaterm acquired Mindbase, a solution 100% focused on supporting the mental health of all first responders. The technology analyzes and understands potential traumatic events, enabling peer support teams to take a more proactive approach to wellness. The solution is coupled with a wellness app with purpose-built and clinically backed content. These tools help agencies monitor the mental well-being of their agency more proactively and ultimately provide the care and support first responders deserve.